

State of Wyoming Corner Record

(In compliance with the *CORNER PERPETUATION AND FILING ACT*, Wyoming Statutes, 1997, Section 33-29-140, et seq., and the Rules and Regulations of the Board of Registration for Professional Engineers and Professional Land Surveyors)

Reverse side of this form may be used if more space is needed.

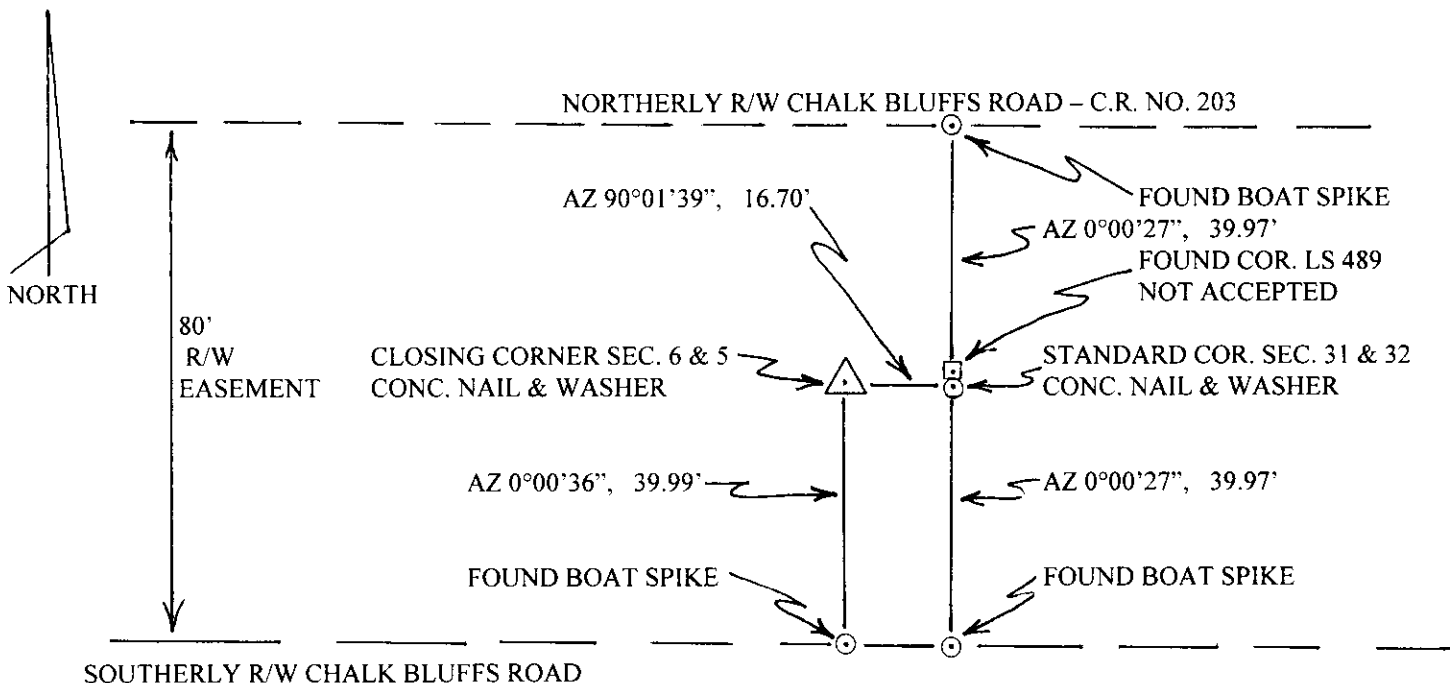
Record of original survey and citation of source of historical information (if corner is lost or obliterated). Description of corner monumentation evidence found and/or monument and accessories established to perpetuate the location of this corner. Sketch of relative location of monument, accessories, and reference points with course and distance to adjacent corner(s) (if determined in this survey). Method and rationale for reestablishment of lost or obliterated corner.

The General Land Office Survey for the Third Standard Parallel between Townships 12 and 13 North, Range 65 West, 6th P.M. completed by William Ashley under contract dated June 20, 1867, and approved by the Colorado Surveyor General on June 7, 1870; and the interior subdivision of Township 12 North, Range 65 West, 6th P.M. completed by E.D. Bright under contract dated Aug. 10, 1868, survey completed Nov. 28, 1868, and approved by the Colorado Surveyor General on Jan. 25, 1875; presently recorded in the office of the U.S. Bureau of Land Management, Wyoming.

RECORD: Closing Section Corner for Sections 5 and 6, (Vol.59 1876, Pg.186): "...set sandstone 14 x 11 x 9 for closing cor. to secs. 5 & 6..."

NOT FOUND: SEE - SURVEYOR'S REPORT on following page.

SET: Concrete nail with 1 1/2" diameter washer stamped LS 4828 in asphalt road surface; with references cited below. See RECORD OF SURVEY recorded in the Laramie County Clerk's Office under Reception No. 616226, Bk. 2338, Pg. 133



Date of Field Work: APRIL 2013

Office Reference: _____

CROSS INDEX DIAGRAM

1	2	3	4	5	6	7	8	9	10	11	12	13	14	15	16	17	18	19	20	21	22	23	24	25		
A																									A	
B																									B	
C					6	5	4	3	2	1															C	
D																										D
E																										E
F																										F
G																										G
H																										H
J																										J
K																										K
L																										L
M																										M
N																										N
O																										O
P																										P
Q																										Q
R																										R
S																										S
T																										T
U																										U
V																										V
W																										W
X																										X
Y																										Y
Z																										Z

Land Surveyor / Firm / Address

John J. Studley, LS No. 4828

Studley Land Surveying, PC

615 West Dale Blvd.

Chevenne, Wyoming 82009

Telephone: **307-287-4755**

This corner record was prepared by me or under my direction and supervision.
SEAL & SIGNATURE



Corner Name: Closing Section corner common to Sections: 5 and 6 T 12 N , R 65 W : 6th P.M. Cross-Index No.: A 5
SBRPEPLS/PLSW: March 1994; PLSW January 1998

SURVEYOR'S REPORT

The original GLO stone monument was not found.

The Third Standard Parallel was resurveyed in January 1969 by the Laramie County Engineer's Office, and is recorded in County Road Book No. 51 (CR 51), pages 88 through 117. In this survey each of the Standard and Closing Corners on the Third Standard Parallel were reestablished and referenced on the assumed right of way with 8" Boat Spikes (BS). Many of these corners were also referenced to found Section or Quarter Corners to the north or south of the Third Standard Parallel. It is this surveyors professional opinion that this survey completed by the Laramie County Engineer's Office, and the associated Boat Spike reference monuments are the best available evidence for reestablishing the original position of said Third Standard Parallel.

The above referenced survey was done in preparation for the reconstruction of Chalk Bluffs Road originally established in 1912 as County Road 78, and later reidentified as County Road 203. This reconstruction project was a "FARM TO MARKET" road project using Federal funds through the Wyoming State Highway Dept. under Project No. SC-CFM 2-15. The Wyo. Hwy. Dept. plans for this project were approved 9-26-1969. These plans clearly identify two separate lines for the centerline of the road travelway, and the Third Standard Parallel line. They also clearly identify having found "NAILS" for the Standard (SCRP) and Closing (CCRP) reference points. The point being that what these plans show as "R/W MARKER" (monuments actually labelled REFERENCE MARKER) were references to the centerline of the road travelway under this project, not the Standard Parallel. The two lines are not coincidental.

Survey monuments found at Standard and Closing corners measured 40' off of the Wyo. Hwy. Dept. "REFERENCE MARKER" were therefore not accepted as being a correct position. In this particular case a Standard Corner for Sections 31 and 32 was monumented 40' off of a Wyo. Hwy. Dept. "REFERENCE MARKER" by LS No. 489, but was not accepted as being a correct position. I have sent my report to Uintah Engineering for their consideration. I also set a Concrete Nail and washer for this Standard Corner, using the two Boat Spikes set to reference the corner by the Laramie County Engineer. The Concrete nail is located 1.21' south of the Uintah Engineering corner, which is also the dimensional difference between the Wyo. Hwy. Dept. "REFERENCE MARKER" and the found Boat Spike reference monument. I make note here that as you progress further east, the dimensional differences between the Wyo. Hwy. Dept. "REFERENCE MARKER" and the found Boat Spike reference monuments set by the Laramie County Engineer's Office increase significantly.

CONCLUSION: I reestablished the Closing Corner for Sections 5 and 6 on the Third Standard Parallel using the found Boat Spikes (BS) referenced in the Laramie County Engineer's resurvey of the Third Standard Parallel and recorded in County Road Book No. 51, Pages 88 through 117 (see page 112). This Closing Corner is located 39.99' northerly off of the Boat Spike reference monument set by the County Engineer, and 38.96' northerly off of the Wyo. Hwy. Dept. "REFERENCE MARKER" for the centerline of the road travelway. Both reference monuments can be used for future relocation of this Closing Corner.

